

## **Historic, archived document**

Do not assume content reflects current scientific knowledge, policies, or practices.



62.91

RECEIVED

# CATALOGUE

NOV 28 1949

AND PRICE LIST  
U. S. Department of Agriculture

FALL 1949 - - SPRING 1950

"C & O"

## Columbia & Kanogan

### NURSERY COMPANY

THE WENATCHEE NURSERIES

WENATCHEE, WASHINGTON

"C & O"

FRUIT TREES, NUT TREES, GRAPES, BERRIES  
SHADE TREES, ORNAMENTAL TREES  
DECIDUOUS SHRUBS, EVERGREENS  
VINES, ROSES, PEONIES, SEED  
FERTILIZER, ETC.

*Everything for the Planter*

Our TREES and SHRUBS are propagated from carefully selected, vigorous and healthy stock.

We are working with both the Federal and Washington State Departments of Horticulture in the selection of fruit trees from which bud wood and seed is obtained to assure you of the very best productive healthy stock.

Let Washington's Oldest, Largest Nursery  
Supply YOUR Planting Needs

400  
Acres



Established  
1906

*Plant America!*

# PLEASE READ CAREFULLY

## GENERAL INFORMATION

**SHIPPING SEASON**—Our shipping season begins about October 25th and continues until late spring. Where planting conditions are favorable, and if customers request, we can make shipments in mid-winter.

**PLANTING INSTRUCTIONS**—Planting instructions are given on the back of a shipping tag attached to every box or bale, also on the back of your invoice. **BE SURE TO FOLLOW THEM.**

Most failures and complaints are caused by improper planting and lack of proper care for first 30 days after planting. **Do it right** and have successful plantings.

## **WE PAY FREIGHT AND SHIPPING CHARGES** (Except as Noted)

We pay freight charges (except on Evergreens, Shade Trees, and other items as specified in our price list) to any shipping point within the United States on shipments that weigh 100 pounds or over.

On small shipments, \$5.00 to \$25.00, we pay express or mail charges (except Evergreens, Shade Trees, and other items noted) to points in the Pacific Northwest, and one-half the Express or Mail charges to points elsewhere in the United States. **If order is for less than \$5.00, add 10% for postage and packing. Minimum charge 25 cents.**

## **PRICES SUBJECT TO CHANGE WITHOUT NOTICE**

**SALES TAX**—If you live in the State of Washington, add 3 per cent Sales Tax on all Flowering Shrubs, Roses, Evergreens, Shade Trees, or other Landscape Material. No tax on Fruit Trees.

## **NUMBER OF TREES OR PLANTS REQUIRED PER ACRE — HOW TO ESTIMATE**

**Rule**—divide 43,560 (the number of square feet in an acre) by the number of square feet for each plant. The result is the number of trees or plants required for an acre.

**Example** (Square system)—Trees 20 by 25 feet apart: Multiply 20 by 25, equals 500 square feet; 43,560 divided by 500, equals 87 tree per acre.

If trees are planted on the Triangular system, 15 per cent more than for the Square system will be required.

**Strawberries**—Field culture: 1 to 1½ by 2½ to 3½ feet. Garden culture: 1 to 2 feet.

### **USUAL DISTANCES FOR PLANTING**

Apple .....	25 to 35 feet apart
Pear .....	20 to 35 feet apart
Sweet Cherry.....	25 to 40 feet apart
Sour Cherry.....	} 16 to 24 feet apart
Plum.....	
Prune.....	
Apricot.....	
Peach.....	
Grapes .....	7 to 10 feet apart
Currants .....	4 to 6 feet apart
Gooseberries .....	4 to 6 feet apart
Raspberries .....	3 to 4 ft. x 5 to 7 ft.
Blackberries .....	3 to 4 ft. x 5 to 7 ft.
Boysenberries.....	} 7 x 7 or 7 x 8 ft.
Youngberries.....	

## **GUARANTEE**

**WE GUARANTEE** all nursery stock sold by us to be true to name, otherwise we will replace free.

We guarantee all stock to be free from insect pests or plant disease.

We guarantee all nursery stock shipped by us to be of first quality and in good, live, growing condition.

Our stock is carefully handled, has good vitality, and under ordinary conditions will grow.

Any complaint about failure to start growth must be made in writing, direct to our office, within 60 days after planting.

**PRICES ON APPLES, PEARS, APRICOTS, PEACHES, PLUMS, PRUNES, NECTARINES AND QUINCES**

Sizes	Each	25 lots	50 or more
3 to 4 foot .....	\$1.10	\$ .85	\$ .70
4 to 6 foot .....	1.25	.90	.75
{ 5 to 7 foot .....	1.50	1.00	.85
} Extra Select Grade.			

Write for prices in lots of 500 or more.

**TRADEMARKED AND PLANT PATENTED VARIETIES  
FIVE CENTS PER TREE HIGHER THAN ABOVE**

This applies to some varieties of Apples listed on Page 2, Sun Glo and Riland Apricots, Page 3, and some varieties of Peaches listed on Page 5. Cherries priced on Page 4.



(U. S. Plant Pat. No. 90)



**APPLES**

(For Varieties — See Pages 2 and 3)

Varieties marked with an asterisk (\*), do well west of the Cascade Mountains.

Varieties listed in order of ripening.

**See Sensational New Apple, Page 2  
"NU-JON"**

(U. S. Plant Patent Applied For)

**BE SURE TO FOLLOW PLANTING INSTRUCTIONS—**

Most stock that fails to grow is lost from improper planting and lack of care.

## Apples — (Continued)

(For Prices See Page 1)

### SUMMER VARIETIES

- \* **Crimson Beauty**—Very best early apple. Ripens week earlier than Yellow Transparent—has sold for double the price; flaming red, good quality and size. TREE very hardy, vigorous, bears young, produces heavy annual crop.
- \* **Yellow Transparent**—Medium, clear pale yellow, waxy, tart, unexcelled for apple sauce.
- \* **Lodi**—An improved Yellow Transparent that bears every year.

### FALL VARIETIES

- \* **Red Duchess**—Bud sport of Duchess, dark red, more color than Duchess, stands up well when baked.
- \* **Red Gravenstein**—Large, bright red, excellent quality, originated as a bud sport from common Gravenstein.
- \* **Gravenstein**—Large, yellow striped red, tender, juicy, highly flavored.

### WINTER VARIETIES

- \* **Blackmack (T. M. Reg.)**—Sport of McIntosh Red and a more profitable variety.

**Nu-Jon**—Plant patent applied for. Sensational new apple Large, deep red striped. Much larger than Jonathan. Excellent quality, Mildew resistant, ripens 10 days earlier than Jonathan. Exclusive "C. & O." introduction. Write for detailed description. Limited supply. Each.....\$2.00

**Blackjon (T. M. Reg.)**—A bud sport or mutation of Jonathan earlier and more color, deep red.

- \* **Winter Banana**—Large, clear waxy yellow with blush, tart flavor, good cooking.
- \* **McIntosh Red**—Large, bright red, striped, white flesh, excellent, very aromatic, dessert and cooking. Good pollenizer for Richard, Shotwell, common Delicious.

**Jonathan**—Medium, red striped, rich flavor, unexcelled for pies, good dessert.

- \* **Shotwell Delicious (U. S. Plant Pat. No. 90)**—The best improved Delicious; colors earlier than any other Red Delicious. See color photo, page 2.

**Red Delicious**—Stark strain. A bud sport of Delicious ripening just after Shotwell.

- \* **King**—Very large, yellow, splashed with crimson, excellent dessert, good baker.

**Richard (T. M. Reg.) Delicious**—Another bud sport or mutation of the Delicious.

**Delicious**—Large, red, striped, excellent flavor, fragrant aroma, fine eating, best for salads.

**Spitzenberg**—Medium to large, deep red, excellent flavor, an old favorite.

**Spokane Beauty**—Largest apple grown. Greenish yellow, striped with red.

---

BE SURE TO FOLLOW PLANTING INSTRUCTIONS — Most stock that fails to grow is lost from improper planting and lack of care.

## Apples — (Continued)

(For Prices, See Page 1)

- Improved Blaxtaylor No. 201 (T. M. Reg.)**—New all-red Stayman Winesap.
- Stayman Winesap**—Large, striped and splashed with dark crimson, splendid quality, heavy bearer.
- SeeandO (T. M. Reg.) Red Rome No. 262**—Darker color than Rome Beauty. Nearly all color Extra Fancy grade.
- Rome Beauty**—Large, yellow, striped with red, fine, juicy, unexcelled for baking.
- SeeandO (T. M. Reg.) Winesap**—An improved all-red Winesap.
- Winesap (Common)**—Medium, dark red, good keeper and producer.
- Chelan**—Large, golden, winter apple, excellent dessert and cooking, long keeper.
- \***Yellow Delicious**—Resembles Grimes Golden somewhat in shape, color and quality. Excellent cooker, fine dessert. Good pollenizer. 5 cents per tree extra.
- \***Northern Spy**—Large, yellow striped with red, rich and juicy. Old favorite in north and New England.
- Newtown Pippin (Yellow Newton)**—Medium to large, light yellow, excellent for both dessert and cooking.

\*Trade Marked and Plant Patented Varieties.

Price on any of these varieties (except Nu-Jon) 5c per tree higher than for regular varieties. See prices on Page 1.

\*SeeandO Red Rome, No. 262—Trade Mark Reg.

\*SeeandO Winesap—Trade Mark Reg.

Richard Delicious—Trade Mark Reg.

Shotwell Delicious—Plant Pat. No. 90.

Blackjon—Trade Mark Reg.

Improved Blaxtaylor, No. 201—Trade Mark Reg.

Blackmack—Trade Mark Reg.

Nu Jon (Plant Patent applied for) .....Special \$2.00 each

## CRAB APPLES

\***Transcendent**—Large, red and yellow striped, good eating and cooking.

**Whitney**—Large, glossy, striped with carmine. Juicy—pleasant flavor. An excellent ornamental tree, beautiful bloom.



Several thousand "C & O" apple trees nearly ready for digging.

## PEARS

(For Prices, See Page 1)

**Bartlett**—Large, clear yellow, sometimes slightly blushed, occasionally flecked with russet. Juicy, buttery, dessert, cooking and canning.

### NEW ALL RED BARTLETT PEAR

Each . . . . . \$2.00

(Patent applied for)

**Flemish Beauty**—Large, green to yellow, red cheeked, juicy, rich, very productive.

**Gorham**—Of Bartlett type, same high quality and attractive appearance. Ripens two weeks later than Bartlett, keeps month longer. Good quality, rich flavor, good canner.

**Beurre D'Anjou ("Anjou")**—A firm pear, rather large, flesh yellowish white, rich, buttery flavor, good keeper. One of the leading commercial pears.

**Doyenne Du Comice**—Large, yellowish red, rich, juicy.

**Seckel**—Small, brownish green, red cheek, sweet, juicy, excellent.

**Fall Russett (B. Bosc)**—Large, cinnamon russet, long neck, juicy, excellent.

**Winter Nellis**—Medium size, yellow covered with russet, very fine, good producer.

**Old Home**—Blight resistant; good for top working to other varieties.

BARTLETT  
PEAR





## APRICOTS

(For Prices, See Page 1)

Varieties listed in order of ripening.

**Yakimene (Acme)**—A Japanese apricot. Large, early, handsome, distinctive flavor. Excellent dessert.

**Riland (U. S. Plant Pat. No. 74)**—Discovered and introduced by "C. & O.". The earliest commercial apricot. Excellent shipper, good canner; brings top prices. Takes on beautiful color, very attractive. Price on Riland apricots 5c per tree higher than ordinary varieties. See Page 1.

**SUN GLO**—(U. S. Plant Pat. No. 751). Our newest "C.&O." introduction. Large, fine quality Apricot. Beautiful, glossy finish. Fine shipper, bears heavily. Price on Sun Glo 5c per tree higher than ordinary varieties.—See Page 1.

**Perfection**—Very large. Ripens same time as Wenatchee. Promising new variety.

**Phelps**—Largest cot grown, ripens week ahead of Wenatchee, good shipper.

**Chinese**—This new apricot is early bearing, a heavy producer, medium size, yellow, good quality.

**Wenatchee**—Very large: leading apricot of Wenatchee valley, Washington. Very productive—a dessert apricot. (Formerly called Wenatchee Moorpark.)

**Royal**—Medium size—dull yellow with orange cheek—good canner and dryer.

**Blenheim**—Medium size, oval, deep yellow. Good canner—productive—excellent quality.

**Tilton**—Larger than Blenheim, oval—fine flavor. Considered one of the best commercial canners.



RILAND (U. S. Plant Pat. No. 74) APRICOT

## Apricots — (Continued)

For Prices, See Page 1

**Moorpark**—Large, but not as large as Wenatchee—deep yellow blushed with red. A standard variety—good canner.

**J. L. Budd**—A small Russian apricot—very hardy, will grow where other apricots fail. Delicious kernel.

## CHERRIES

(Varieties Listed in Order of Ripening)

### SWEET CHERRIES

SIZES—	Each	25 lots	50 or more
3 to 4 foot .....	\$1.25	\$1.00	\$ .90
4 to 6 foot .....	1.40	1.15	1.00
{ 5 to 7 foot .....	1.65	1.25	1.10
{ Extra Select Grade.			

**Black Tartarian**—Large, purplish black, juicy and rich, certified pollenizer.

**Royal Ann**—Large, pale yellow with red cheek, firm, juicy and sweet. In demand by canneries.

**Centennial**—Large, yellow, certified pollenizer.

**Deacon**—Black, resembles Bing, not quite as large, very resistant to cracking. Certified pollenizer.

**Bing**—Large, black, fine flavor, good shipper.

**Black Republican**—Large, shining black, good keeper and shipper, certified pollenizer.

**Lambert**—Large, dark purplish black, sweet, rich, fine flavor.

### SOUR CHERRIES

SIZES—	Each	25-lots	50 or more
3 ft. up .....	\$1.25	\$1.00	\$ .90
3½ to 5 foot .....	1.40	1.15	1.00
{ 4 to 6 foot .....	1.65	1.25	1.10
{ Extra Select Grade.			

**Early Richmond**—Medium size, dark red, acid.

**May Duke**—Large, red, juicy and rich.

**Montmorency**—Large, red, "the kind the canneries want."

**Late Duke**—Large, light red, late and fine.

**English Morello**—Large, dark red, rich, juicy, acid, good canner.

## PEACHES

(For Prices, See Page 1)

Varieties listed in order of ripening.

"F" denotes freestone; "C" clingstone; "S.C." semi-cling.

Trade Marked and Plant Patented Varieties:

Candoka—Plant Patent No. 51.

Herb Hale—Plant Patent No. 588.

Redelberta—Plant Patent No. 232.

Rio Oso Gem—Plant Patent No. 84.

Early Rochester—Plant Patent No. 351.

Price 5c per tree higher than regular varieties. See Page 1.

\***Mayflower, S. C.**—Earliest of all peaches, medium, red, white flesh.

\***Early Rochester (U. S. Plant Patent No. 315) F.**—New development from the famous Rochester; Ripens approximately three weeks earlier. Has all characteristics of Rochester in fruit, size and tree, but much earlier. Available for profitable early markets.

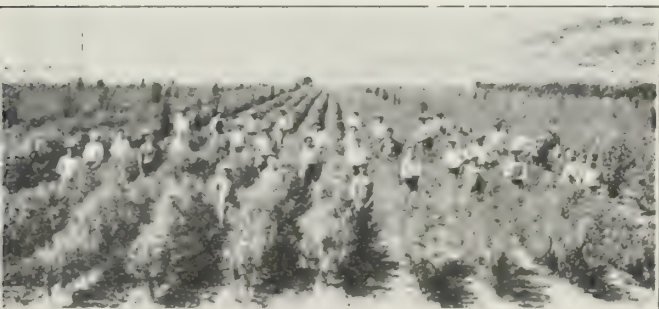
\***Red Haven, F.**—New. Highly colored, good quality, yellow flesh, freestone. Ripens month ahead of Elberta.

PROPERLY PLANTED AND CARED FOR STOCK WILL  
MAKE SATISFACTORY GROWTH

## Peaches — (Continued)

(For Prices, See Page 1)

- \* **Golden Jubilee, F.**—Early, good yellow freestone.
- \* **Rochester, F.**—Very hardy, thrifty grower. Medium size, deep yellow and red, excellent quality. Especially good west of the Cascade mountains.
- \* **Herb Hale (U. S. Plant Patent No. 588) F.**—New, early shipping and canning peach. Originated in H. W. Donahey orchard, Yakima Valley. Large size, excellent quality, yellow meated, free-stone, ripens right after Rochester.
- Valiant, F.**—Resembles Elberta but more globular in shape and of better quality. Considered best canner in Ontario, Canada.
- Slappy, F.**—Large, deep yellow—excellent home canner.
- Early Crawford, F.**—Large yellow—good quality. A good home garden peach.
- \* **Champion, F.**—White-fleshed peach. Firm, sweet, delicious flavor. Tree hardy, and good bearer.
- Hale Haven, F.**—Promising commercial possibilities; earliness, excellence of fruit, good shipping and bearing qualities, vigorous tree growth, resistance to low temperatures.
- \* **Veteran, F.**—Elberta type peach. Tree vigorous grower early production.
- Redelberta (U. S. Plant Pat. No. 232) F.**—A bud sport of the Elberta. A true Elberta in all respects except that it matures about 10 days earlier and has double the red color.
- Early Elberta, F.**—Also known as Improved Elberta. Large golden yellow. Excellent quality, good shipper and commercial canner.
- Elberta, F.**—Very large, bright yellow—good shipper.
- J. H. Hale, F.**—Very large golden yellow—fine shipper. The commercial peach by which all other peaches are measured for standards of excellency.
- Candoka (U. S. Plant Pat. No. 51) F.**—The “fuzzless” peach. Most beautiful peach grown, very large.
- Late Crawford, F.**—Very large, yellow with dark red cheek.
- Indian blood, C.**—Large, red flesh, ideal for pickling and preserving.
- Miller (Orange) Cling, C.**—Large, good flavor, excellent for home canning.
- Rio Oso Gem, F. (U. S. Plant Pat. No. 84)**—Best late variety. Profitable commercial variety.
- October Krummel, F.**—Large size, deep yellow, colored carmine. One of the very latest ripening varieties.



"C & O" Budding Crew

## PRUNES

(For Prices, See Page 1)

**Early Italian**—Resembles Italian, slightly larger and Sweeter. Two weeks earlier. Good commercial variety. Origin: A bud sport of the Italian.

**Sugar**—Very large, oval, dark purple, tender, sweet; particularly fine for home drying and canning. Contains almost 24 per cent sugar.

**Hungarian**—Very large, dark red, juicy and sweet. Its bright color, productiveness and shipping qualities make it profitable for home or market.

**Double X French**—Larger than Petite, just as sweet. Bud sport of Petite.

**Italian**—Medium size, oval tapering at both ends; dark purple, flesh greenish yellow; separates freely from pit; excellent for eating fresh and the best for drying.

## PLUMS

(For Prices, See Page 1)

Asterisk (\*) denotes varieties which do well west of the Cascade mountains. Varieties listed in order of ripening.



ITALIAN  
PRUNE

## Plums — (Continued)

(For Prices, See Page 1)

**Beauty**—Similar in quality and appearance to Climax, two weeks earlier. Excellent pollenizer for Santa Rosa.

**Climax**—Very large, heart-shaped, deep red, good shipper.

**Shiro (Early Gold)**—Very early, large, golden yellow, good quality. A Burbank introduction.

\***Yellow Egg**—Large, egg-shaped, yellow, good canner.

**Burbank**—Large, cherry red, mottled with yellow, sweet, good shipper.

**Maynard**—Very large, nearly round, dull red, sweet.

**Santa Rosa**—One of the largest, most beautiful of all cling plums. Dark crimson, almost round, excellent shipper.

**Simonii**—Shape and color like tomato.

\***Yakima**—Very large, egg-shaped, red, good shipper.

\***Peach Plum**—Very large, roundish, purple. Excellent for eating fresh.

**Wild Plum**—This is the popular old wild plum native to the Mid-West and East. Round, bright red. Famous for jams and plum butter.

\***Damson**—Small, round oval, dark purple, fine canner.

\***Imperial Gage**—Small, round, greenish yellow, good canner.

**President**—Late ripening shipping variety, popular and profitable. Fruit large, dark blue, flesh yellow.

**Duarte**—Japanese blood plum, juicy, sweet, red flesh, earlier, hardier and better than Satsuma.



ASSORTED  
PLUMS



Picking

**SHOTWELL**  
DELICIOUS

Actual packed crop from seven and one-half acre orchard Shotwell Delicious, 12,312 boxes which grower sold for over \$44,000.00—about \$5,900.00 per acre.

## NECTARINES

(For Prices, See Page 1)

The tree of the Nectarine to all appearances can be called a peach tree. In growth, habit, and soils required it is similar to the peach. The fruit differs from the peach in that the skin is smooth, and the rich, aromatic flesh has a flavor all its own. The Nectarine is an exceedingly delicious dessert fruit.

**Boston Red**—Large size—deep yellow with bright blush, sweet.

**Quetta**—Large, yellow green, rich delightful aroma, excellent quality.

\***Sure Crop F.**—New. From New Zealand. Firm flesh, large, pleasing flavor, freestone. White skin with attractive red coloring.

## QUINCES

(For Prices, See Page 1)

**Orange**—Large, round, bright yellow, an old favorite, finest quality.

**Pineapple**—Very large, apple-shaped, flavor resembles pineapple, delightfully fragrant when fresh and delicious when cooked.

SEE THAT STOCK IS PROPERLY WATERED AND CULTIVATED—IT WILL PAY

## NUT TREES

### ALMONDS

#### SIZE—

3 to 4 foot .....	\$1.25 each	Doz. Lots \$1.10 each
4 to 6 foot .....	\$1.50 each	Doz. Lots \$1.35 each

**I.X.L.**—Large, soft shell.

**Nonpareil**—Thin "paper-shell." Good cropper. Each variety should be planted for proper pollenization.

### FILBERTS

#### SIZE—

3 to 4 foot .....	\$1.40 each	Doz. Lots \$1.25 each
4 to 6 foot .....	\$1.65 each	Doz. Lots \$1.50 each

**Barcelona**—Large, round, comes free from husk. Pollinize with DuChilly or Daviana.

**DuChilly**—Large, long nut, superior quality. Tree not so large as Barcelona, good bearer.

**Daviana**—Long type nut similar to DuChilly. Tree large grower. Excellent pollinizer for DuChilly and Barcelona.

**Royal**—New high quality, very large, round nut.

#### SIZE—

3 to 4 foot .....	Each \$2.50
4 to 6 foot .....	Each \$2.75

### ENGLISH WALNUT

**Franquette**—One of the best English Walnut varieties for the Northwest. Large, well-filled nuts.

3 to 4 foot .....	Grafted \$2.75	Not Grafted \$2.25
4 to 6 foot .....	Grafted \$3.00	Not Grafted \$2.50

**SeeandO (T. M. Reg.)**—Local walnut developed from an old hardy tree. Thin-shelled, plump. Grafted trees.

#### SIZE—

3 to 4 foot .....	Each \$3.00
4 to 6 foot .....	Each \$3.25

### BLACK WALNUT

**American**—Standard black walnut. Fine shade tree. Good pollenizer for English Walnuts.

#### SIZE—

3 to 4 foot .....	Each \$2.00
4 to 6 foot .....	Each \$2.25

**Thomas**—Soft shell, good quality nut. Heavy bearer, Grafted trees.

#### SIZE—

3 to 4 foot .....	Each \$2.75
4 to 6 foot .....	Each \$3.00

## GRAPES

(Varieties listed in order of ripening.)

	Each	Doz. lots Each	25-lots Each	50-lots Each	100-lots Each
All Varieties.....	50	.45	.40	.35	.30

(Except Golden Muscat and Black Monukka)

Write for Special Prices on Quantity Lots.

### AMERICAN VARIETIES (Hardy)

**Fredonia (Black)**—New early grape. Berries large, round, hang well, fine flavor.

**Portland (White)**—Berries sweet, juicy, fine flavor. Productive and hardy.

**Campbell's Early (Black)**—Large, sweet juicy, good.

**Island Belle (Black)**—Large, early, good west of the Cascade mountains.

**Niagara (White)**—Large bunches and berries, the standard white grape, called "White Concord."

**Caco (Wine-red)**—New, exceptional merit. Compact bunch, good size, hardy, thrifty grower.

**Concord (Black)**—The standard black, everywhere; very productive.

**Agawam (Red)**—Large, thick skin, sweet.

**SPECIAL! GOLDEN MUSCAT**—Beautiful, large, rich and sweet. Muscat flavor. ....Each .75



CONCORD GRAPE

GRAPES ARE SOMETIMES HARD TO START. BE SURE THEY ARE WELL WATERED UNTIL GROWTH STARTS.



## Grapes — (Continued)

### EUROPEAN VARIETIES (Medium Hardy)

**Csaba (Pearl of Csaba)**—White, hardiest, north European grape, small seeds, excellent table grape, good wine grape. Ripens early.

**Black Monukka**—Seedless, large, very sweet. A grape everyone should have.....Each .75

**Malaga (White)**—Very large bunches, good shipper.

**Ribier (Black)**—Largest, new, very fine.

**Black Hamburg (Black)**—A great favorite, large.

**Muscat (White)**—Muscat flavor, excellent.

**Thompson Seedless (White)**—Seedless, small, sweet, good drier.

**Flame Tokay (Red)**—Large, a favorite, one of the best.

**Zinfandel (Black)**—The most famous wine grape, enormous quantity of compact bunches, very juicy, sweet.

**Alecante Bouschet (Red)**—Sweet, bright red juice. A wonderful wine grape—even the leaves turn brilliant red in the fall.



## RASPBERRIES

(Spring Delivery Only)

	Doz. lots	25-lots	50-lots
All varieties .....	\$4.00	\$7.50	\$12.50

**Cumberland (Black Cap)**—One of the best and largest.

**Cuthbert (Red)**—Standard market variety, favorite.

**Latham (Red)**—New, disease resistant, very productive, large.

**Indian Summer (Red)**—Everbearing, very productive, large, fine quality.

**New Washington (Red)**—Crossed between Latham and Cuthbert.

BE SURE TO READ INSTRUCTIONS FOR PLANTING AND CARE OF STOCK

## BOYSENBERRIES AND YOUNGBERRIES

(Spring Delivery Only)

	Dozen	Per 25	Per 50
All Varieties .....	\$4.50	\$8.50	\$15.00

**Boysenberry**—Recent introduction. Berries very large and of fine flavor. Considered by many superior to Youngberry.

**Boysenberry (Thornless)**—Same as above, but without thorns.

**Youngberry**—Recent introduction, very fine, cross between Loganberry and Dewberry.

**Youngberry (Thornless)**—Same as above, but without thorns.

## BLACKBERRIES

(Spring Delivery Only)

	Dozen	Per 25	Per 50
All Varieties .....	\$4.50	\$8.50	\$15.00

**Lawton**—Well-known market variety.

**Mercereau**—Hardy, upright stocky canes, heavy producer, sweet.

**Thornless**—No thorns, trails, train on trellis, good.

## STRAWBERRIES

(Spring Delivery Only)

No order accepted for less than 25 of a variety.

### STANDARD VARIETIES

Per 25	Per 50	Per 100	Per 1,000
\$1.00	\$1.75	\$3.00	\$25.00

**Improved Oregon**—Large, firm, good shipper.

**Improved Marshall**—Large, good canner.

**Dorsett**—New, early, heavy bearer, large, good shipper.

### EVERBEARING VARIETIES

Per 25	Per 50	Per 100	Per 1,000
\$1.50	\$2.50	\$4.50	\$35.00

**Gem**—Heavy bearer, beautiful color and shape, delicate flavor and a firm market berry.

**Mastodon**—Largest, heavy bearer.

	Per 25	Per 50	Per 100	Per 1,000
<b>Rockhill</b> .....	\$3.00	\$5.50	\$9.50	\$75.00

(One of the latest, improved everbearers. Does not grow many runners. Excellent flavor, large size, heavy bearer.)

BE SURE TO READ INSTRUCTIONS FOR PLANTING AND CARE OF STOCK



State Capitol grounds — Olympia, Washington, showing planting of Globe Locust trees grown by "C & O" Nursery Company.

## GOOSEBERRIES

(Spring Delivery Only)

(Sold in State of Washington Only)

**Oregon Champion**—Largest, best commercial variety, free from mildew.....each .50—dozen, each .45

## CURRANTS

(Spring Delivery Only)

(Sold in State of Washington Only)

**Perfection**—Red, finest and largest known. . .each 50; doz. .45

## MISCELLANEOUS

	Each	Dozen	50	100
<b>Rhubarb, McDonald Red</b>	\$ .40	\$4.00	\$14.00	\$25.00
<b>Horseradish (crowns)</b> .....	.20	2.00	7.00	12.50
<b>Asparagus, Mary Washington</b> .....	.....	1.00	2.50	4.00

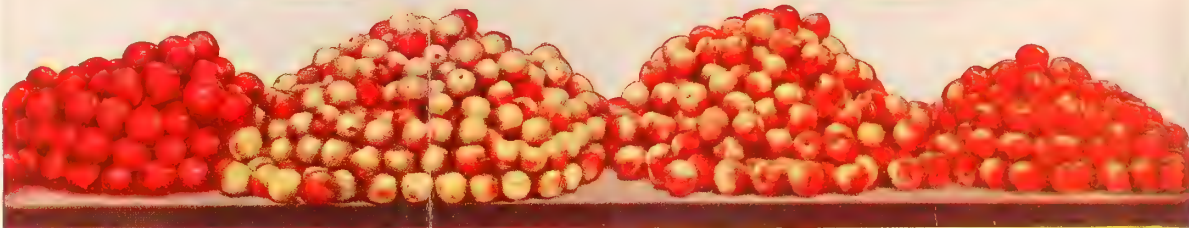
BE SURE TO READ INSTRUCTIONS FOR PLANTING AND CARE OF STOCK



# BLACKJON

The best ALL-RED, EARLY COLORING JONATHAN DISCOVERED AND INTRODUCED BY "C. & O."

Blackjon was discovered as a "sport" limb on a Jonathan tree. This color photo shows the crop from original limb, and also crop from balance of tree. Note Blackjon is solid red.—Apples from balance of tree, picked same day, less than one quarter red. Earlier color, better color; earlier picking means added returns and profit for the grower.



<b>BLACKJON</b> 97% Extra Fancy	43% C-Grade	<b>COMMON JONATHAN</b> 34% Fancy	23% Extra Fancy
------------------------------------	-------------	-------------------------------------	-----------------

Since our company was formed in the year 1906, we have grown and distributed many millions of fruit trees to every fruit growing part of the world. Our company has discovered, introduced, trade-marked and patented more fruit than any other nursery in the West.

**PRACTICALLY EVERY FRESH FRUIT APRICOT, NOW IN PRODUCTION, AND MARKETED IN THE U. S. A. WAS INTRODUCED BY THE "C. & O."**

We specialize in fruit tree production and are always looking for improved varieties. In our packing house we have controlled temperature of 38°, keeping stock dormant from digging time in the fall until middle of June.



OFFICES AND PACKING HOUSE OF THE COLUMBIA & OKANOGAN (C. & O.) NURSERY COMPANY

**FORTY-FOUR YEARS OF GROWING BETTER NURSERY STOCK**

## EVERGREENS

C. & O. Evergreens are well-grown, having good root systems and shapely tops. All Evergreens are balled and burlaped. Evergreens are sold f.o.b. Nursery, freight or express charges paid by the purchaser.

ONE-HALF PURCHASE PRICE OF EVERGREENS  
PAYABLE BEFORE SHIPMENT

**Washington State Tax**—Add 3% Washington State Sales Tax on all orders for landscape material for delivery within the State of Washington.

### Arborvitae (Thuja)

<b>American Arborvitae</b> ( <i>T. Occidentalis</i> )	{ 2½-3 ft.	\$ 3.50
	{ 3-4 ft.	4.50
	{ 4-5 ft.	6.00

<b>American Pyramidal Arborvitae</b> ( <i>T. Pyramidalis occidentalis</i> )	{ 3-4 ft.	5.00
	{ 4-5 ft.	6.00
	{ 5-6 ft.	8.00
	{ 6-7 ft.	10.00

<b>Douglas Pyramidal Arborvitae</b> ( <i>T. spiralis douglasi</i> <i>pyramidalis</i> )	{ 3-4 ft.	5.00
	{ 4-5 ft.	6.00
	{ 5-6 ft.	8.00

<b>Berckmann's Dwarf Golden Arborvitae</b> ( <i>T. aurea nana orientalis</i> )	{ 12-15 in.	3.25
	{ 15-18 in.	4.50

<b>Globe Arborvitae</b> ( <i>T. globosa occidentalis</i> )	{ 12-15 in.	3.50
	{ 15-18 in.	4.50

<b>Beverly Arborvitae</b> ( <i>T. Orientalis Beverlyensis</i> )	{ 3-4 ft.	6.50
	{ 4-5 ft.	7.50

<b>Andorra Juniper</b> ( <i>J. Depressa Plumosa</i> )	{ 15-18 in.	4.00
	{ 18-24 in.	5.00

<b>Meyer Juniper</b> ( <i>J. squamata meyeri</i> ) Deep blue color, dwarf, irregular habit, very striking.	{ 12-15 in.	3.25
	{ 15-18 in.	4.50

<b>Pfizer's Chinese Juniper</b> ( <i>J. chinensis pfizeriana</i> ). Wide spreading, bushy, feathery gray-green foliage. Hardy. 4-6 ft. at maturity.	{ 15-18 in.	3.75
	{ 18-24 in.	4.50
	{ 24-30 in.	5.50

<b>Savin Juniper</b> ( <i>J. sabina</i> ) Dark green, semi-spreading.	{ 15-18 in.	3.50
	{ 18-24 in.	4.25

<b>Tamarix Juniper</b> ( <i>J. sabina tamariscifolia</i> ) One of the finest creeping varieties, dense, compact, blue-green.	{ 12-15 in.	3.50
	{ 15-18 in.	4.25
	{ 18-24 in.	5.50

<b>Eastern Red Cedar</b> ( <i>J. Virginiana</i> ) Hardy, rapid grower, lacy green foliage. Easily sheared.	{ 2½ ft.	4.50
	{ 3-4 ft.	5.00

<b>Pyramidal Red Cedar</b> ( <i>J. Virginiana pyramidalis</i> )	4-5 ft.	8.00
--	---------	------

## Evergreens — (Continued)

	Size	Each
<b>Colorado Green Spruce</b> ( <i>Picea pungens</i> ) Bright green foliage, beautiful, virgorous, hardy.	{ 2-3 ft. { 3-4 ft.	\$4.25 5.00
<b>Colorado Blue Spruce</b> ( <i>P. pungens glauca</i> ) Same as Colorado Green Spruce except foliage is a blue green color.	{ 18-24 in. { 2- 3 ft.	5.50 7.50
<b>Norway Spruce</b> ( <i>P. excelsa</i> ) Rapid grower, excellent for wind breaks and hedges.	{ 2½-3 ft. { 3- 4 ft. { 4-5 ft. { 5-6 ft.	3.75 4.50 6.00 7.50
<b>Concolor Fir</b> ( <i>Abies Concolor</i> ) The white fir. Large beautiful stately tree. Soft blue color.	{ 3-4 ft. { 4-5 ft.	7.00 8.00
<b>Mugho Pine</b> ( <i>Pinus mugho</i> ) The only dwarf pine. Rich, green foliage, especially adapted for founda- tion and rock garden planting.	{ 12-15 in. { 15-18 in.	4.00 4.50
<b>PLUME Retinospora</b> ( <i>R. Plumosa Chamae- cyparis</i> )	{ 24-30 in. { 30-36 in. { 3- 4 ft.	4.50 5.50 6.50
<b>Yew (Taxus)</b> Spreading Yew ( <i>T. Cuspidata</i> ) Dwarf Yew ( <i>T. Suspidata Nana</i> )	18-24 in. 15-18 in.	5.00 5.00
<b>English Pyramidal Yew</b> ( <i>T. Baccatta</i> )	{ 18-24 in. { 24-30 in. { 30-36 in.	4.75 5.50 6.50

## Broad-Leafed EVERGREENS

Balled and Burlaped

Following Stock F.O.B. Wenatchee

One-half purchase price payable before shipment.

	Size	Each
<b>Berberis Juliana</b>	12-15 in.	2.25
<b>Cotoneaster Horizontalis</b>	18-24 in.	3.50
<b>Daphne Cneorum</b>	{ Medium { Large	2.25 3.50
<b>Firethorn</b> ( <i>Pyracantha Lalandi</i> )	{ 2 ft. { 3 ft.	2.50 3.25
<b>Oregon Grape</b> ( <i>Mahonia</i> )	{ 15-18 in. { 18-24 in.	2.50 3.25
<b>Heather, Red Scotch</b> ( <i>Calluna vulgaris rubra</i> )	12-15 in.	2.25
<b>Box Wood (True tree)</b>		5.00
<b>Viburnum—</b> ( <i>Burkwoodi</i> )		3.75
A new attractive shrub, flowers delicate pink, fragrant.		

## SHRUBS — Balled and Burlaped

Following Shrubs F.O.B. Wenatchee

One-half purchase price payable before shipment.

	Size	Each
<b>Azalea Mollis</b> Orange-red, early spring.	12-15 in.	\$3.50
<b>Azalea Amoena Coccinea (Red)</b>	10-12 in.	2.25
<b>Azalea Amoena (Rosy purple)</b>	12-15 in.	4.00
<b>Dogwood (Cornus)</b>	{ 2- 3 ft.	4.00
Pink Flowering (C. Fla. rubra)	{ 3- 4 ft.	5.00
White Flowering (C. Fla.)	3- 4 ft.	4.00
<b>Daphne Mezerum</b> (Early Blooming red shrub)		2.75
<b>Golden Privet</b>		1.50
<b>Magnolia</b>		
Stellata (Dwarf)	{ 18-24 in.	6.00
Soulangiana	{ 2- 3 ft.	7.50
<b>Moonlight Broom</b>		1.50
<b>Maple, Bloodleaf</b>	{ 2- 3 ft.	5.00
(Acer palmatum atropurpureum)	{ 3- 4 ft.	7.00



PINK FLOWERING DOGWOOD



## Shade and Ornamental Trees

**Washington State Tax:** Add 3 per cent Washington State Sales Tax on all orders for landscape material for delivery within State of Washington.

	Size	Each
<b>Ash</b>	{ 6- 8 ft.	2.00
Green	} 8-10 ft.	2.50
Mountain—See Mountain Ash		
<b>Birch</b>	{ 5- 6 ft.	1.75
European White	} 6- 8 ft.	2.25
(Betula Alba)	} 8-10 ft.	3.00
Weeping—See Weeping Trees		
<b>Catalpa</b>	{ 6- 8 ft.	2.25
Speciosa (Western Catalpa)	} 8-10 ft.	3.00
Bungei (Umbrella Catalpa)	1-1¼ in.	3.00
6-7 ft. heads	1¼ - 1½ in.	3.50
<b>Cherry, Flowering</b>	{ 3- 4 ft.	2.00
(Kwanzan, Double Pink)	} 4- 5 ft.	2.50
<b>Crab</b>		
Red Vein—Has large, red flowers, followed by large purplish fruit and leaves.	{ 4- 5 ft.	\$1.75
	} 5- 6 ft.	2.25
Parkman—Bright rose-colored, double flowers. Dwarf tree. Very beautiful.	{ 4- 5 ft.	1.75
	} 5- 6 ft.	2.25
Betchel	{ 4- 5 ft.	1.75
Double pink	} 5- 6 ft.	2.25
Red Silver—Red leaves, deep red bloom, very handsome and hardy.	3-4 ft.	1.75



PAUL'S SCARLET HAWTHORNE

## Shade and Ornamental Trees (Continued)

	Size	Each
<b>Elm</b>	} 6- 8 ft.	2.25
American		3.00
	} 5- 6 ft. 6- 8 ft. 8-10 ft. 10-12 ft.	1.50
		2.00
Siberian		2.50
		3.00
<b>Golden Chain</b>	} 5- 6 ft.	3.00
Laburnum Vossi		3.75
<b>Ginkgo Biloba (Maidenhair)</b>	} 4- 5 ft. 6- 8 ft.	2.50
		3.00
<b>Hawthorne, Paul's Scarlet</b>	} 5- 6 ft. 6- 8 ft.	2.50
		3.25
<b>Linden</b>		
American	} 6- 8 ft.	2.50
(Tilia Americana)		3.00
<b>Locust</b>		
Black	} 5- 6 ft. 6- 8 ft. 8-10 ft.	\$1.50
		2.00
		2.50
Globe, 6-7 ft. heads	} 1-1¼ in. 1¼-2 in.	3.00
		3.50
Pink Flowering	} 4- 5 ft. 5- 6 ft. 6- 8 ft.	2.00
		2.25
		2.75
<b>Maple</b>		
Norway	} 5-6 ft. 6-8 ft. 8-10 ft. 10-12 ft. 1½-2 in.	1.50
(Acer Platanoides)		2.00
		2.50
		3.00
		3.50
Schwedleri	} 6- 8 ft.	2.50
(A. Schwedleri)		3.00
Silver (or Soft)	} 6- 8 ft.	2.00
A. dasycarpum)		2.50
Sugar	} 5- 6 ft.	2.00
(A. Saccharum)		2.50
Japanese Bloodleaf—See "Balled Shrubs", Page 20.		
<b>Mountain Ash, European</b>	} 5- 6 ft.	2.00
(Sorbus aucuparia)		2.50
<b>Mulberry</b>		
Russian (Morus Taetarica)	} 6- 8 ft.	2.00
		2.50
<b>FLOWERING PEACH</b>		
Camelliaflora peach	} 3- 4 ft.	1.50
Bright pink, double flowers		1.75
Choice		
Burbank Red Peach	} 3- 4 ft.	1.50
A choice, double, red-flowered		1.75
Burbank White Peach	4- 5 ft.	1.50
An attractive, double, white-flowered variety.		

## Shade and Ornamental Trees (Continued)

	Size	Each
<b>FLOWERING PLUM</b>		
	Size	Each
Prunus Cistena (Purple Leaf Plum)	{ 3- 4 ft. } 4- 6 ft.	1.50 2.00
Blossoms semi-double, rich, soft pink. Foliage deep red to purple.		
P. Triloba (Dwarf Flowering Plum)	{ 2- 3 ft. } 3- 4 ft.	1.25 1.50
Beautiful dwarf tree or shrub.		
Rich, rose-pink, double flowers. Known as Rose Tree of China.		
 <b>Poplar</b>		
Bolleana	{ 6- 8 ft. } 8-10 ft.	1.75 2.25
Carolina	{ 6- 8 ft. } 8-10 ft.	\$1.50 2.00
Lombardy	{ 6- 8 ft. } 8-10 ft.	1.50 2.00
 <b>Red Bud (<i>Cercis canadensis</i>)</b>	 4- 5 ft.	 2.00
 <b>Sycamore (<i>Platanus</i> or <i>Plane Tree</i>)</b>		
American ( <i>P. occidentalis</i> )	{ 6- 8 ft. } 8-10 ft.	2.50 3.00
 <b>Tulip Tree (<i>Liriodendron</i>)</b>	 5- 6 ft.	 2.50
 <b>Willow</b>		
Golden	{ 6- 8 ft.	1.75
Golden yellow twigs and bark	} 8-10 ft.	2.25
Weeping—See Weeping Trees.		

### WEEPING TREES

Birch, Cut-leaf Weeping ( <i>Betula laciniata</i> )	{ 5- 6 ft. } 6- 8 ft. } 8-10 ft.	3.00 3.75 4.50
 <b>Willow</b>		
Niobe Golden Weeping Golden bark and twigs.	6- 8 ft.	2.50
 <b>Wisconsin Weeping</b>		
Long, drooping, graceful branches.	{ 5- 6 ft.	2.00
Fast grower.	} 6- 8 ft.	2.50

## FLOWERING SHRUBS

Our shrubs are Number One Grade and at least two years old. They have been transplanted and have excellent root systems and symmetrical tops. Most of this stock will bloom the first year planted.

	Each
<b>Althea</b> , Red, White, or Purple.....	\$ 1.25
<b>Azalea</b> —See "Shrubs—Balled & Burlaped."	
<b>Almond</b> —Flowering, Pink, White.....	1.25
<b>Barberry, Thunbergii</b> —Japanese Green.....	1.00
Red leaved.....	1.25
<b>Beauty Bush</b> —(Kolkwitzia).....	1.25
Slender, graceful arching branches covered with pink flowers, late spring.	
<b>Butterfly Bush</b> —(Buddleia)	
<b>Charming</b> —Pink .....	1.25
<b>Ile de France</b> —Purple.....	1.25
<b>Royal Red</b> (Plant Pat.)—Rich deep red-purple.....	1.50

### DOGWOOD (Cornus)—

\***Florida**—White Flowers (Small Tree)

\***Florida Rubra**—Pink Flowers (Small Tree)

\*For above two varieties see "Shrubs Ball and Burlaped."—Page 20.



FORSYTHIA

## Flowering Shrubs—(Continued)



FLOWERING QUINCE

## DEUTZIA—

Gracillis—White flowers, May.....	1.25
Lemoine—White flowers, May, June.....	1.25
Pride of Rochester—White, tinged pink, June.....	1.25

## FORSYTHIA—

Fortunei—Upright, bright yellow flowers.....	1.25
Suspensa (Weeping Forsythia)—Yellow flowers.....	1.25

Heather—See Red Scotch Heeather under “Shrubs—Balled and Burlaped”—Page 20.

## Honeysuckle (Lonicera), Tatarian,—

Upright Bush, Pink, Red.....	1.25
------------------------------	------

## HYDRANGEA—

Arborescens—White, June-July.....	1.25
Paniculata Grandiflora—(P.G.).....	1.25
White, bronze-pink. August, September.	

Kerria, Japonica—Yellow, double flowers.....	1.25
--	------

## LILACS (Syringa)—

Purple, common (vulgaris)—Purple flowers.....	1.25
White, common (vulgaris)—White flowers.....	1.25

Persian (persica)—Large spikes of purple-lacy flowers.....	1.50
--	------

## BUDED LILACS—

Charles Joly—Double. Dark violet.....	\$ 2.00
Souv. De Ludwig Spaeth—Single. Purplish red.....	2.00
Katherine Havemeyer—Double. Mauve pink.....	2.00
Miss Ellen Willmott—Best double white.....	2.00
President Grevy—Double. Clear blue.....	2.00

BE SURE TO READ INSTRUCTIONS FOR PLANTING AND CARE OF STOCK

## Flowering Shrubs — (Continued)

	Each
<b>MOCK ORANGE—(Philadelphus)</b>	
Lemoine—White .....	1.25
Virginal—White, very fragrant.....	1.25
<b>QUINCE, Flowering—(Cydonia Japonica)</b>	
Japanese—Deep red, early spring.....	1.25
Maulei (Dwarf)—Orange-red. Low growing.....	1.25
<b>SNOWBALL—(See Viburnum plicatum.)</b>	
<b>SPIREA—</b>	
Anthony Waterer—Low grower, red flowers.....	1.00
Blue Mist—Lacy blue flowers.....	1.35
Froebeli—Similar to S. Anthony Waterer, though taller	1.25
Prunifolia (Bridalwreath)—White flowers.....	1.25
Thunbergi—Feathery foliage, white flowers.....	1.00
Van Houttei—White. An old favorite.....	1.00
<b>TAMARIX—</b>	
African—Drooping, feathery foliage.....	1.25
Dusky pink flowers.	
Hispidia—Upright, bluish-green foliage.....	1.25
Bright pink flowers.	
<b>VIBURNUM—</b>	
Plicatum—(Japanese Snow Ball).....	1.50
Showy white flowers in balls, June. Handsome foliage, autumn coloring.	
Tomentosum—Flat heads, white flowers, June.....	1.50
<b>WEIGELA—</b>	
Eva Rathke—Deep red, low growing.....	1.25
Rosea—Very fine, deep rose.....	1.25
Bristol Ruby (Plant Patented)—New red, very fine.....	1.50

### HEDGE PLANTS

	25	50	100
<b>BARBERRY, Thunbergi</b> .....	10.00	17.50	30.00
Makes attractive hedge, 3-4 ft. Does not require trimming. Small, sharp thorns make good barrier.			
<b>BARBERRY, Red</b> .....	12.50	22.50	40.00
<b>PRIVET, English—</b>			
18 to 24 in.....	8.00	15.00	25.00
2 to 3 ft.....	10.00	17.50	32.50
3 to 4 ft.....	12.50	22.50	40.00
<b>PRIVET, LODENSE—</b>			
6 to 10 in.....	10.00	17.50	30.00
12 to 15 in.....	12.50	22.50	40.00
Dwarf, compact grower, excellent for low-growing hedges, borders.			
<b>SPIREA, Van Houttei</b> .....	10.00	17.50	32.50

## VINES AND CREEPERS

Our Vines and Creepers are all two or more years of age,  
No. 1 grade.

	Each
<b>HONEYSUCKLE</b>	
Scarlet Trumpet, bright scarlet.....	1.00
Hall's Japan, cream and white, very fragrant.....	1.00
Gold Flame, new, rare, very showy.....	1.25
<b>Ivy (Boston)</b> —Green leaves, clings to wood or stone	.85
<b>Engleman's Creeper</b> —Green leaves, very hardy	.85
<b>Virginia Creeper</b> —Green leaves, red in fall.....	.85
<b>Trumpet Vine (Bignonia)</b> —Orange-red flowers	1.00
<b>Wisteria (Sinensis)</b> —Purple .....	1.25

## PEONIES

(Fall Delivery Only)

Peonies thrive in any good garden soil where sunlight is plentiful. Once established, they flower year after year. This list shows some of the most highly rated varieties according to the ratings of the American Peony Society. Peonies should be planted with the eye 2 inches deep.

### WHITE

	Each
<b>Festiva Maxima</b> , 9.3. Large white flecked with crimson	\$ 1.00
<b>Duchess de Nemours</b> , 8.1. White with sulphur yellow center .....	1.00
<b>Le Cygne</b> , 9.9. (The Swan) Pure white. Highest rated peony. ....	2.00

### PINK

<b>Floral Treasure</b> , 7.5. Rich pink and salmon.....	1.00
<b>Mons. Jules Elie</b> , 9.2. Deep shell pink with silvery reflex.	1.25
<b>Therese</b> , 9.8. Large, rich satin pink shading to lilac in center. ....	1.50
<b>LaFrance</b> , 9.0. Large clear bright pink.....	1.00
<b>Martha Bulloch</b> , 9.1. Soft, rose-pink shading to silvery shell pink on outer petals. ....	1.50
<b>Tourangelle</b> , 9.4. Pearl overlaid with shades of salmon pink. ....	1.25

### RED

<b>Karl Rosenfeld</b> , 8.8. Rich red. Excellent cut flower.	1.25
<b>Longfellow</b> , 9.0. Pure bright crimson. Very fine	1.25
<b>Rubra Superba</b> , 8.4. Brilliant deep crimson	1.00
<b>Philippe Rivoire</b> , 9.2. Bright, rich, dark crimson. Highest rated red.....	1.50

### MISCELLANEOUS

<b>Primevere</b> , 8.6. Sulphur yellow, fragrant. Fine for cutting	1.75
<b>Philomele</b> , 7.7. The gypsy colored peony. Pink and yellow bands of color.....	1.00

BE SURE TO READ INSTRUCTIONS FOR PLANTING AND  
CARE OF STOCK

## ROSES

Finest Parade of Roses in the West

### HYBRID TEA BUSH ROSES

Large, Thrifty, Two-Year-Old Plants, Will Bloom This Year

- Ami Quinard**, Beautiful velvet blackish red.....\$1.00
- Capistrano**, (Patent applied for). All America winner for 1950. Unusually large buds and flowers, fragrant, deep glowing, rose-pink, long stems, leathery foliage..... 2.50
- Betty Uprichard**. Large two-tone pink. Profuse..... 1.00
- Charlotte Armstrong**, (Plant Patent.) Long, slender carmine buds, brilliant cerise blooms..... 1.50
- Christopher Stone**, One of the best reds. Glowing brilliant crimson-scarlet with deeper shadings, long buds, good foliage..... 1.00
- Countess Vandal**, (Plant Patent.) Long pointed buds. Carmine pink, shaded soft pink and gold..... 1.35
- Crimson Glory**, (Plant Patent.) An outstanding free and fragrant bloomer. Vivid crimson red..... 1.35
- Dainty Bess**, Single shell pink with vivid wine colored stamens ..... 1.00



**DIAMOND JUBILEE**  
(Plant Pat. No. 824)





**FORTY-NINER**  
(Plant Pat. No. 792)



**NOCTURNE**  
(Pat. No. 713)

## Rose List — (Continued)

<b>Diamond Jubilee, (Patented)</b> All America winner for 1948. Glowing buff-orange with a touch of orange-yellow at base of petals. Non-fading, fragrant, long stems, dark green foliage.....	2.00
<b>Duquesa de Penaranda,</b> Blend of apricot-orange and pink	1.00
<b>Eclipse, (Plant Patent.)</b> Long streamlined bud. A rich, superb yellow rose.....	1.35
<b>E. G. Hill,</b> Large, double, lasting, deep scarlet.....	1.00
<b>Etoile de Hollande,</b> Dark, velvety, red, large, fragrant, profuse. ....	1.00
<b>Forty-Niner, (Plant Patent.)</b> All American winner for 1949. Brilliant two-tone Flame red and clear yellow reverse, very striking.....	2.00
<b>Feu Joseph Looymans,</b> Shapely, long buds, Apricot yellow	1.00
<b>Golden Dawn,</b> Large, fragrant, sunflower yellow.....	1.00
<b>Hector Deane, (Plant Patent.)</b> Unusual vibrant red. Gorgeous pointed buds. Very fragrant. Abundant bloomer.....	1.50
<b>K. A. Victoria,</b> Exotic pure white blooms.....	1.00
<b>Los Angeles,</b> Glorious rich flame pink.....	1.00
<b>Mission Bells, (Patent applied for.)</b> All America winner for 1950. Deep salmon-pink opening to a clear shrimp-pink, non-fading, long stems.....	2.50
<b>Mirandy—(Plant Patent.)</b> All American winner for 1945. Georgeous fragrant, deep red with black shadings.....	1.50
<b>Mme. Edouard Herriot,</b> Coral red to shrimp pink. Profuse	1.00
<b>Mrs. E. P. Thom,</b> Pure yellow, a superb rose.....	1.00
<b>Mrs. Sam McGredy,</b> Long coppery buds. Copper-orange flushed with red.....	1.00
<b>McGredy's Ivory,</b> Creamy white with light yellow base. Long pointed buds.....	1.25
<b>McGredy's Scarlet—</b> Long lasting, large, double, rose-red blooms. One of the best.....	1.00
<b>New Yorker, (Plant Patent.)</b> Huge deep red blooms, very fragrant. Described as "The best red Rose of all time."	2.00
<b>Nocturne, (Plant Patent.)</b> All American Winner for 1948. Dark red, very large, perfect buds.....	1.50
<b>Peace, (Plant Patent.)</b> All American winner for 1946. Large golden yellow petals edged with pink.....	2.00
<b>President Hoover,</b> Combines shades of cerise-pink, scarlet and yellow.....	1.00
<b>Rubaiyat, (Plant Patent.)</b> All American winner for 1947. Rich crimson to rose red. Long shapely buds.....	1.50
<b>Saturnia, (Plant Patent.)</b> Brilliant cardinal red with salmon-yellow reverse.....	1.50
<b>Signora, (Plant Patent.)</b> Long buds of warm, burnt sienna, opening to a lighter hue toward mandarin.....	1.50
<b>Sonata, (Plant Patent.)</b> Long pointed buds of intense cochineal-red open to flowers of deep vivid pink. Fine cut flower.....	1.50
<b>Sutter's Gold, (Patent applied for.)</b> All American winner for 1950. Long, pointed, bright yellow buds, richly shaded with orange and red, long lasting, very fragrant.....	2.50
<b>Talisman,</b> A tri-color masterpiece, golden yellow, scarlet and orange.....	1.00
<b>Tallyho, (Plant Patent.)</b> All American winner for 1949. Two-tone. Unique rose pink, outer petals rich crimson. Long, beautiful buds, spicy fragrance.....	2.00

## Rose List — (Continued)

### FLORIBUNDA AND POLYANTHA ROSES

#### A Wealth of Bloom All Season

<b>Ann Poulsen, (Plant Patent.)</b> Deep pink, ruffly, semi-double blooms. Very floriferous.....	1.25
<b>Donald Prior, (Plant Patent.)</b> Large, free-flowering, semi-double, bright scarlet.....	1.25
<b>Fashion, (Patented.)</b> All American winner for 1950. Beautiful coral suffused with gold, very fragrant, strong grower .....	2.00
<b>Floradora, Scarlet red, very double, foliage, leathery and glossy. An American Award winner.....</b>	1.25
<b>Ideal, Dark velvety crimson, fragrant, prolific, deep green foliage. ....</b>	1.00
<b>Improved LaFayette, Deep vivid crimson. Bushy.....</b>	1.00
<b>Mme. Cecil Brunner, Exquisite tiny pink buds. The Sweet-heart rose .....</b>	1.00
<b>Pinocchio, (Plant Patent.)</b> Salmon buds open to pink blooms, shaded deeper at edges.....	1.25
<b>Pink Bountiful, (Plant Patent.)</b> Deep reddish pink buds, fragrant. Deep leathery foliage, vigorous.....	1.25
<b>World's Fair, (Plant Patent.)</b> Similar to Donald Prior but larger and darker red. Very fine.....	1.25

### CLIMBING ROSES

<b>Blaze, Most popular scarlet, recurrent bloomer.....</b>	1.50
<b>Countess of Stradbroke, Dark, glowing crimson, very fragrant, recurrent bloomer, rich foliage.....</b>	1.25
<b>Dr. J. H. Nicolas, (Plant Patent.)</b> Large deep rose-pink fragrant, everblooming.....	1.50
<b>Etoile de Hollande, Dark velvety red, recurrent bloomer..</b>	1.00
<b>Mermaid, Large, single, sulphur-yellow blooms, dark glossy foliage, recurrent bloomer.....</b>	1.50
<b>Mrs. E. P. Thom, Pure yellow.....</b>	1.00
<b>New Dawn, Attractive light-pink, everblooming.....</b>	1.50
<b>Peace, (Patent applied for.)</b> New, large lemon-yellow edged rose-pink, very double.....	2.50
<b>Paul's Lemon Pillar, Creamy buds, beautiful, large, white blooms. ....</b>	\$1.00
<b>Paul's Scarlet, Produces a mass of large, scarlet bloom. Very striking.....</b>	1.00
<b>President Hoover, Multi-color. Pink scarlet and gold ...</b>	1.00
<b>Talisman. Golden-yellow, scarlet and orange. Large blooms.</b>	1.00

### SHRUB ROSE

<b>Austrian Copper, Coppery red and yellow. A brilliant shrub. ....</b>	1.00
---	------

BE SURE TO READ INSTRUCTIONS FOR PLANTING AND CARE OF STOCK



**SUTTERS GOLD**  
(Plant Patent Applied For)



**TALI YHO** (Plant Pat. No. 828)

# GARDEN ACCESSORIES

(Prices F.O.B. Wenatchee)

## VIGORO FERTILIZER

Clean, Odorless, Economical.

100-lb. bag .....	\$5.00
50-lb. bag .....	3.00
25-lb. bag .....	1.75
10-lb. bag .....	.90
5-lb. bag .....	.50
1-lb. bag .....	.15

## PEAT MOSS

Large bale .....	\$5.00
Large sack (mill pack).....	1.25

## LAWN SEED

C. & O. Lawn Mixture, per lb.....	\$1.25
Kentucky Blue, per lb.....	1.25
White Lawn Clover, per lb.....	1.60

## "EXTRAX" GARDEN SPRAY

Kills every type of insect from Aphids to Zimbs.  
Directions for use on all containers.

4 fluid oz. bottle.....	\$1.00
(Makes 25 to 50 gals. of diluted spray)	

## RIX SPRAY

Controls mildew, peach leaf curl, red spider, mites, and is a soil corrective.

Pint .....	\$ .85
------------	--------

## NICOTINUM 10

A Nicotine and DDT spray—fatal to nearly all insects, plant diseases, etc.

5 oz. ....	\$1.00
------------	--------

## "DOGZOFF"—Dog Repellent—"SCRAM"

Safeguards Evergreens, Shrubs, Flowers, Trees, etc. Corrects dog's bad habits. Frees garden of nuisances. Easily applied. An effective repellent for mice, rabbits, etc. Cats do not like Dogzoff—can be used as protection for birds.

3-oz. bottle or package.....	\$ .60
------------------------------	--------

## VITAMIN B-1.....25c and \$1.00

Stimulates new root growth—fine for use in starting dormant trees and shrubs into active growth.

## TRANSPLANTONE.....25c and \$1.00

Reduces wilt in transplanting. Invigorates roots. Any successful planter should always have Vitamin B-1 or Transplantone on hand. If stock shows signs of wilt, or is not growing properly—add B-1 or Transplantone according to directions. One half cent will often save a \$25.00 tree or shrub.

## TREE SEAL

A perfect grafting compound or tree paint—extra heavy.

Per Gallon.....	\$1.75	Per Quart.....	\$ .65
-----------------	--------	----------------	--------

## TREE PROTECTORS

Heavy treated tarred felt 7" x 15"—wired top and bottom for tying. These protectors guard against rodent injury, also protect tree from sunscald, winter injury, etc.

Each.....	\$ .04¼	Per Hundred.....	\$3.75
-----------	---------	------------------	--------



ESTABLISHED IN 1906

NURSERIES IN THE  
WENATCHEE VALLEY  
OFFICES IN THE  
C AND O BUILDING  
SECOND AND MISSION STS  
WENATCHEE, WASHINGTON

**Columbia & Okanogan**  
**NURSERY COMPANY**  
(THE WENATCHEE NURSERIES)  
WENATCHEE, WASHINGTON

FRUIT  
SHADE AND NUT TREES  
SHRUBS-EVERGREENS  
ROSES-VINES-BERRIES  
ETC

Dear Grower:

Enclosed is copy of our current catalogue price list. Many prices are reduced and we believe you will agree that the stock is reasonably priced. We have been growing nursery stock since the year 1906 in the Wenatchee Valley. Our soil and climate combine to make growing conditions ideal for nursery stock.

All our fruit stock is dug in late fall - after it is dormant - then placed in regulated storage where temperature never gets below 37° nor above 42°. Moisture content of air is held at 85% humidity, so that stock can be held and shipped from November to May in prime condition.

During the past half century we have introduced many fruit varieties which are now considered by commercial planters to be improved varieties, and have replaced many of the older varieties of fruit.

In apples we have developed and introduced

**RICHARD DELICIOUS**      SeeAndO **WINESAP**      SeeAndO **RED ROME No. 262**

**BLACKJON**      **IMPROVED BLAXTAYMAN No. 201**

**SHOTWELL DELICIOUS**      **BLACK MACK**

and our latest introduction **NU-JON**; an apple ripening about two weeks earlier than Jonathan. It is over 50% larger in size, has wonderful quality, free from mildew, keeps well in storage, etc., etc. It should replace Jonathan.

In peaches we have introduced **REDELBERTA**, **CANDOKA**, **EARLY ROCHESTER**, **HERB HALE**.

In apricots, **WENATCHEE**, **RILAND** and our latest introduction **SUN GLO**, which has size and quality necessary for fresh fruit, and compares favorably with the best canning cots. In addition it is firm, ships well, ripens early and has a beautiful deep orange color with a high gloss satin finish.

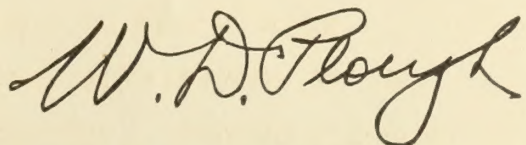
We are constantly trying to produce better, more dependable stock, at fair reasonable prices. We are working with both State and Federal horticulturists in selecting parent stock that is thrifty and disease free.

If we can help you with your planting problems, please feel free to call, write or phone. We have a complete landscape service in connection.

Very truly yours,

COLUMBIA & OKANOGAN NURSERY COMPANY

By



WDP/gc

WASHINGTON'S OLDEST... LARGEST NURSERY

From Coast to Coast it's "C & O"—Plant 'Em—Watch 'Em Grow!







# Columbia & Kanogan

## NURSERY COMPANY

(THE WENATCHEE NURSERIES)

2nd and Mission Streets

Phone 294

WENATCHEE, WASHINGTON

ESTABLISHED 1906

---

---

### OWNERS AND MANAGEMENT OF "C & O"

W. D. PLOUGH, President—	
with "C & O" since . . . . .	1925
J. A. SNYDER, Vice-President—	
with "C & O" since . . . . .	1909
GORDON W. PLOUGH, Secretary-Treasurer—	
with "C & O" since . . . . .	1943
W. E. HAWLEY, Landscape Architect	
GEORGE VAN WELL, Field Superintendent	
WILLARD GOSSMAN, Superintendent in Charge of Growing Ornamentals	

### SOME OF OUR LARGE PLANTINGS

of ornamentals, shade trees and lawns include Grand Coulee Dam, the world's largest man-made structure; Farragut Naval Station, Farragut, Idaho; Washington State Capitol, at Olympia; Government Housing Projects at Bremerton, Seattle and Renton, Washington.

### WE GROW LOTS OF FRUIT

In connection with our nursery we operate more than 100 acres and this season (1949) we will ship from these orchards many tons of choice fruit, including Riland Apricots, Bing and Lambert Cherries, Redelberta, Candoka and Herb Hale Peaches—500 tons of Bartlett and early bearing Anjou Pears—5,000 boxes of Blackjon Apples, 10,000 boxes of Richared and Shotwell Delicious Apples, also SeeandO Red Romes, SeeandO Winesap and many other varieties.

### PLANT "C & O"

- FRUIT-NUT TREES and Small Fruits . . . . . Pages 1 to 15
- EVERGREENS—Shade Trees and Shrubs . . . . . Pages 18 to 27
- ROSES - PEONIES—Selected Varieties . . . . . Pages 28 to 31

*We Ship Everywhere . . .  
California to Maine*

SAFE ARRIVAL GUARANTEED